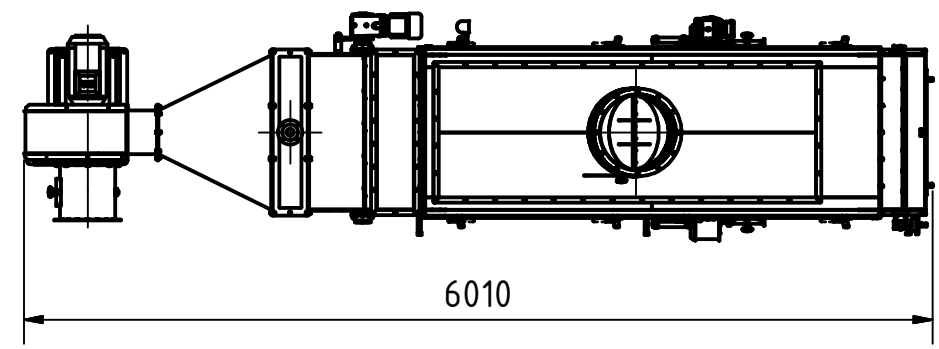
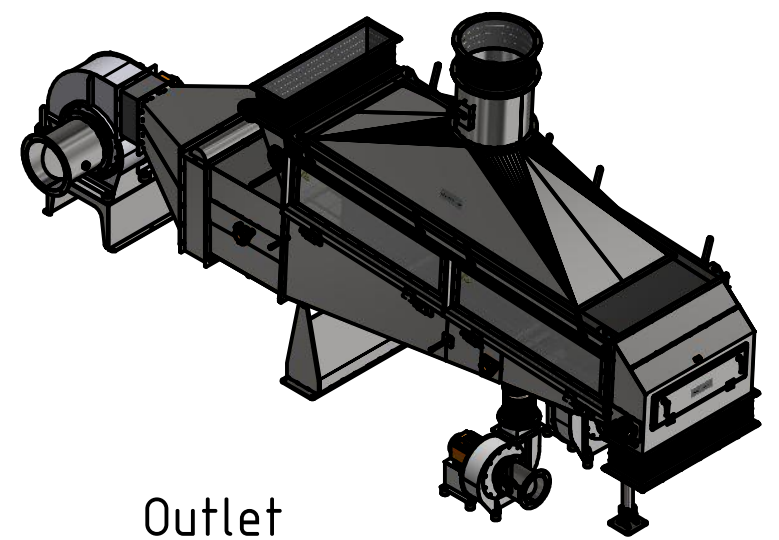
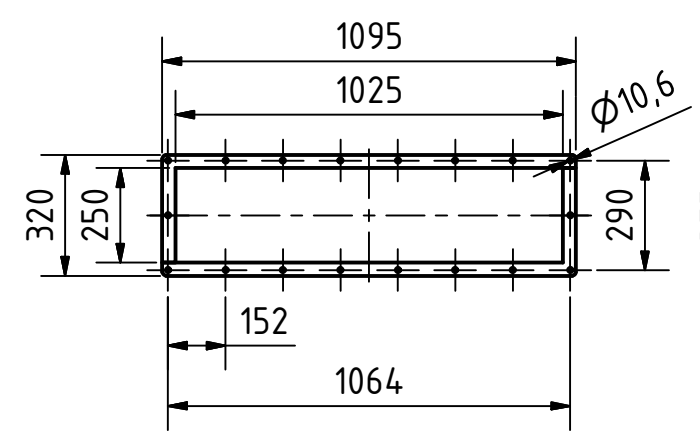


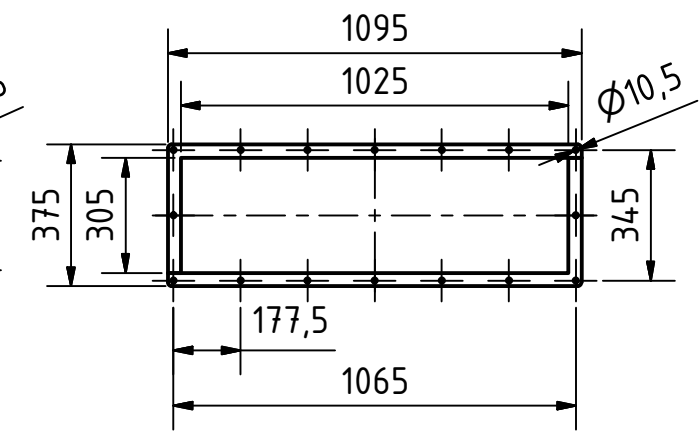
Specifications	
Size	6010 x 1503 x 3296
Inlet	995 x 250
Outlet	1025 x 305
Aspiration	Ø500
Motor	2x 0,55 kW
Warm Air V.	7,5 kW
Cold Air V.	2x 2,2 kW
Heat Exchanger Inlet	EN 1092-1/11/B1/DN50x2,9/PN40
Heat Exchanger Outlet	EN 1092-1/11/B1/DN32x2,6/PN40
Weight	1854 kg



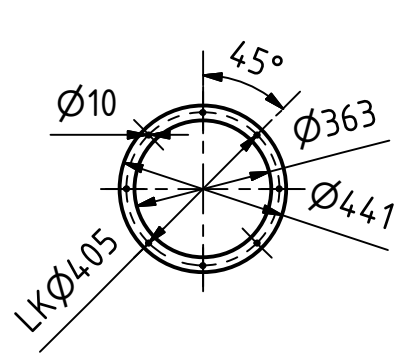
Inlet
(1 : 20)



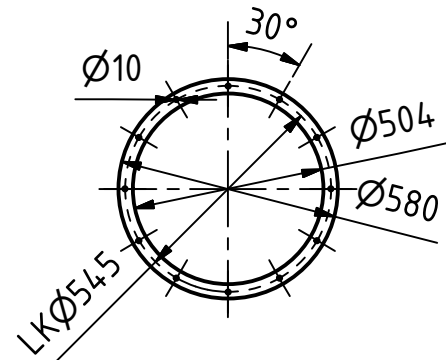
Outlet
(1 : 20)



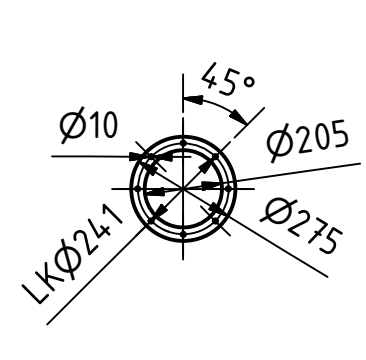
Warm Air
(1 : 20)




Aspiration
(1 : 20)



Cold Air
(1 : 20)



 Streckel & Schrader GmbH & Co. KG Hinschenfelder Str. 35 22041 Hamburg Germany Tel.: 040 2880 340 10		Werkstoff: Edelstahl	Maßstab: 1 : 50 Halbzeug: Gewicht: 1854,402 kg
DATUM Gezeichnet: 26.11.2012 Kontrolliert: Norm:		Name Bartelmann	Benennung: Fluid bed drier type WST 300 V2 DF with cold air
Status Änderungen DATUM Name		Zeichnungs-Nr.: 013-00696a	
		1 A3	