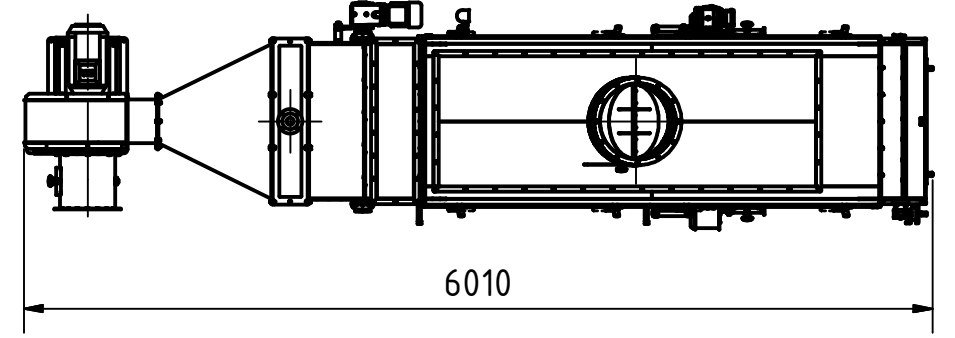
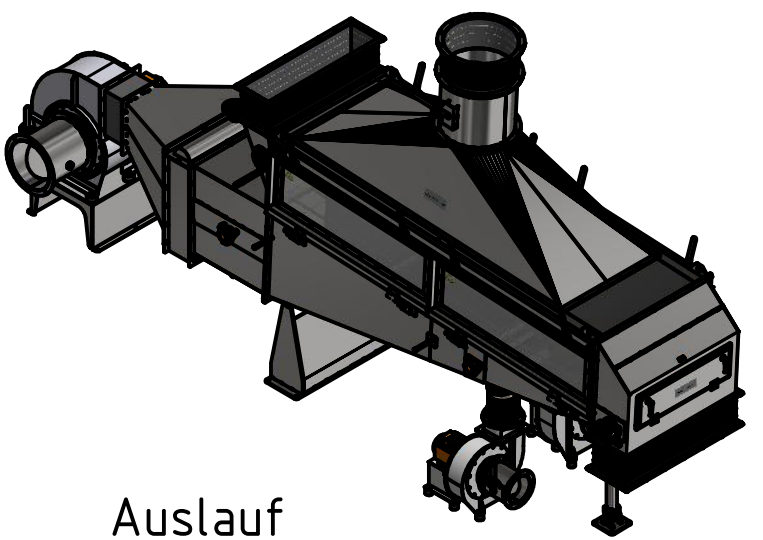
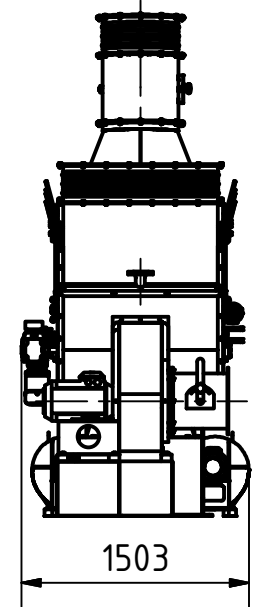
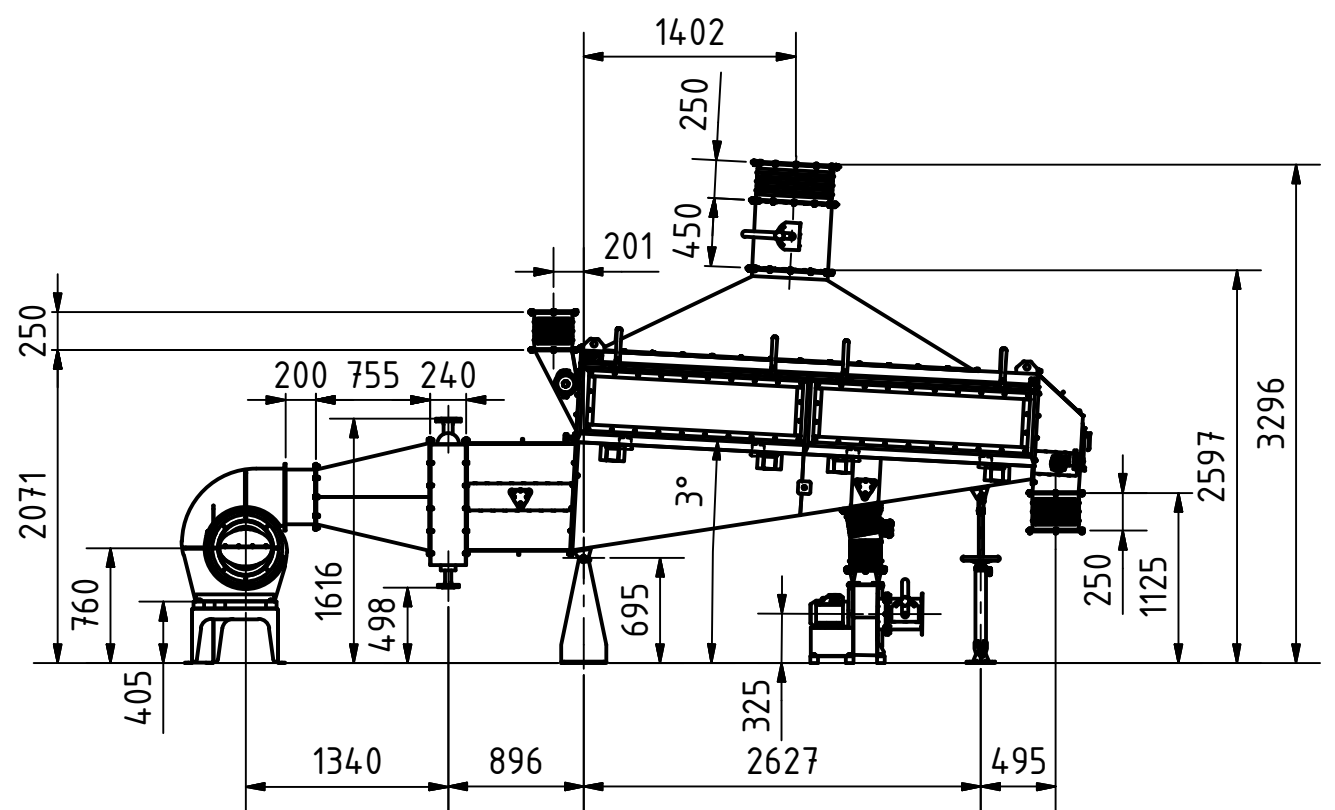
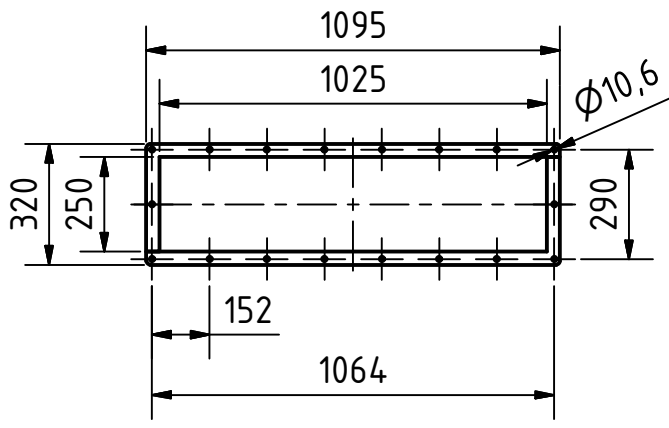


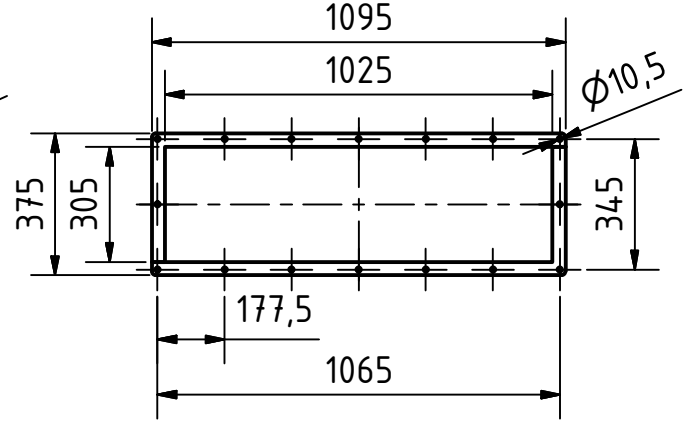
| Technische Daten | |
|------------------------|-------------------------------|
| Größe | 6010 x 1503 x 3296 |
| Einlauf | 995 x 250 |
| Auslauf | 1025 x 305 |
| Aspiration | Ø500 |
| Motor | 2x 0,55 kW |
| Warmluft V. | 7,5 kW |
| Kaltluft V. | 2x 2,2 kW |
| Wärmetauscher Eintritt | EN 1092-1/11/B1/DN50x2,9/PN40 |
| Wärmetauscher Austritt | EN 1092-1/11/B1/DN32x2,6/PN40 |
| Gewicht | 1854 kg |



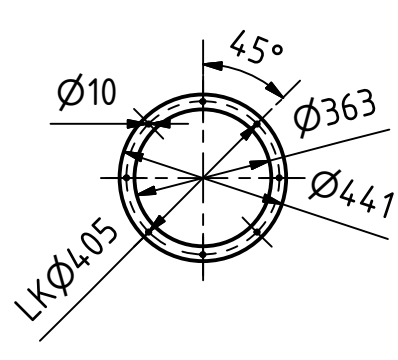
Einlauf
(1 : 20)



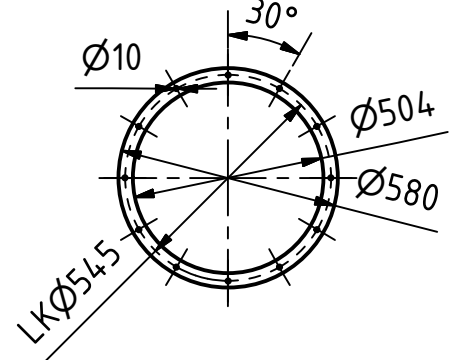
Auslauf
(1 : 20)



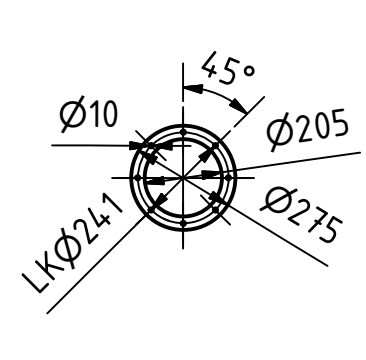
Warmluft
(1 : 20)



Aspiration
(1 : 20)



Kaltluft
(1 : 20)



 Streckel & Schrader GmbH & Co. KG
Hinschenfelder Str. 35
22041 Hamburg Germany
Tel.: 040 2880 340 10

| Status | Änderungen | DATUM | Name |
|--------|------------|-------|------|
| | | | |
| | | | |
| | | | |
| | | | |
| | | | |

| | | |
|-------------------------|---------------------|--------------------|
| Werkstoff: Edelstahl | DATUM 26.11.2012 | Name Bartelmann |
| | Kontrolliert | |
| | Norm | |

| | |
|--------------------------------------|---|
| Maßstab: 1 : 50 | Benennung: Wirbelschichttrockner Typ WST 300 V2 DF mit Kaltluft |
| Halbzeug: Gewicht: 1854,402 kg | |
| Zeichnungs-Nr.: 013-00696a | 1 A3 |